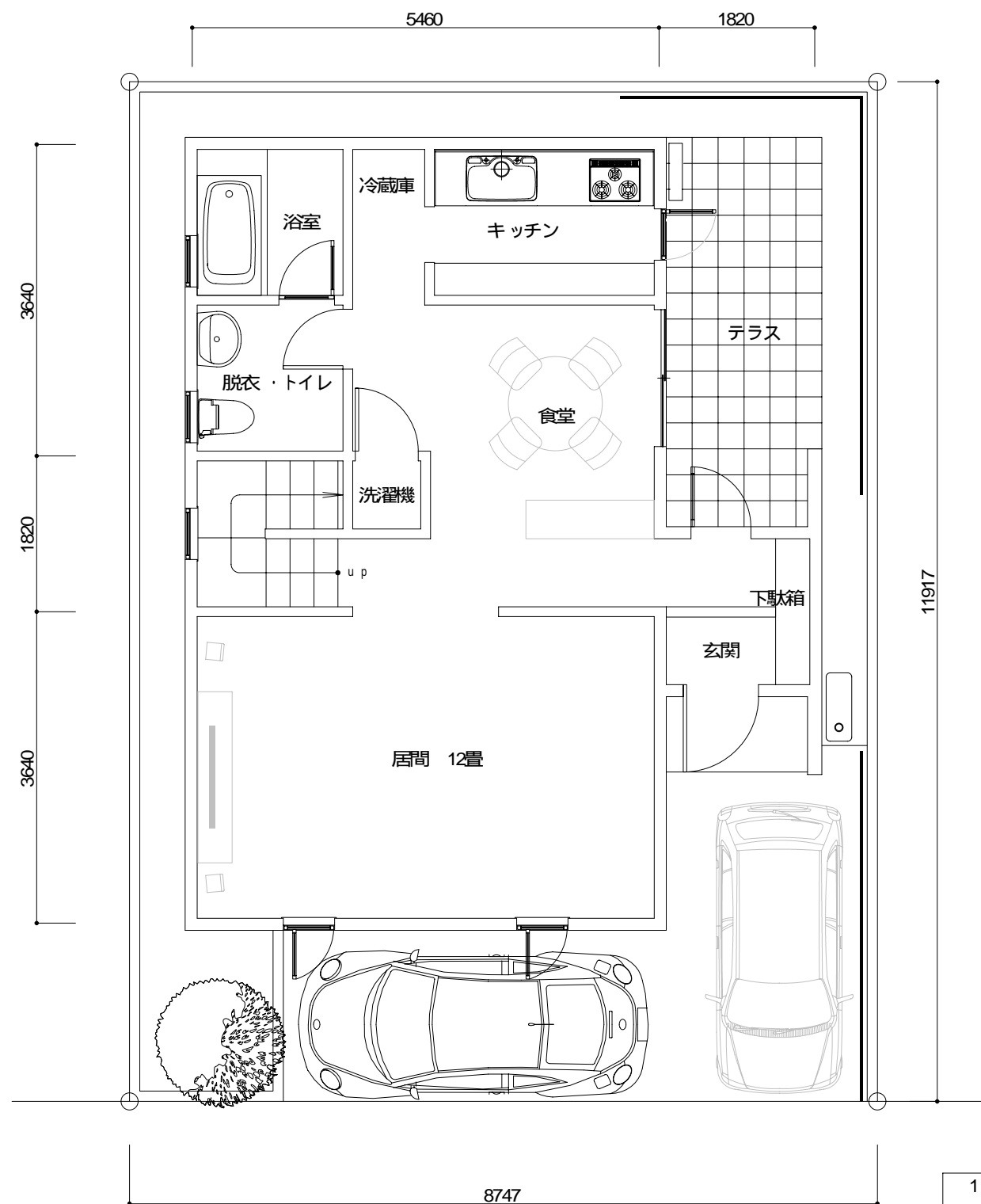
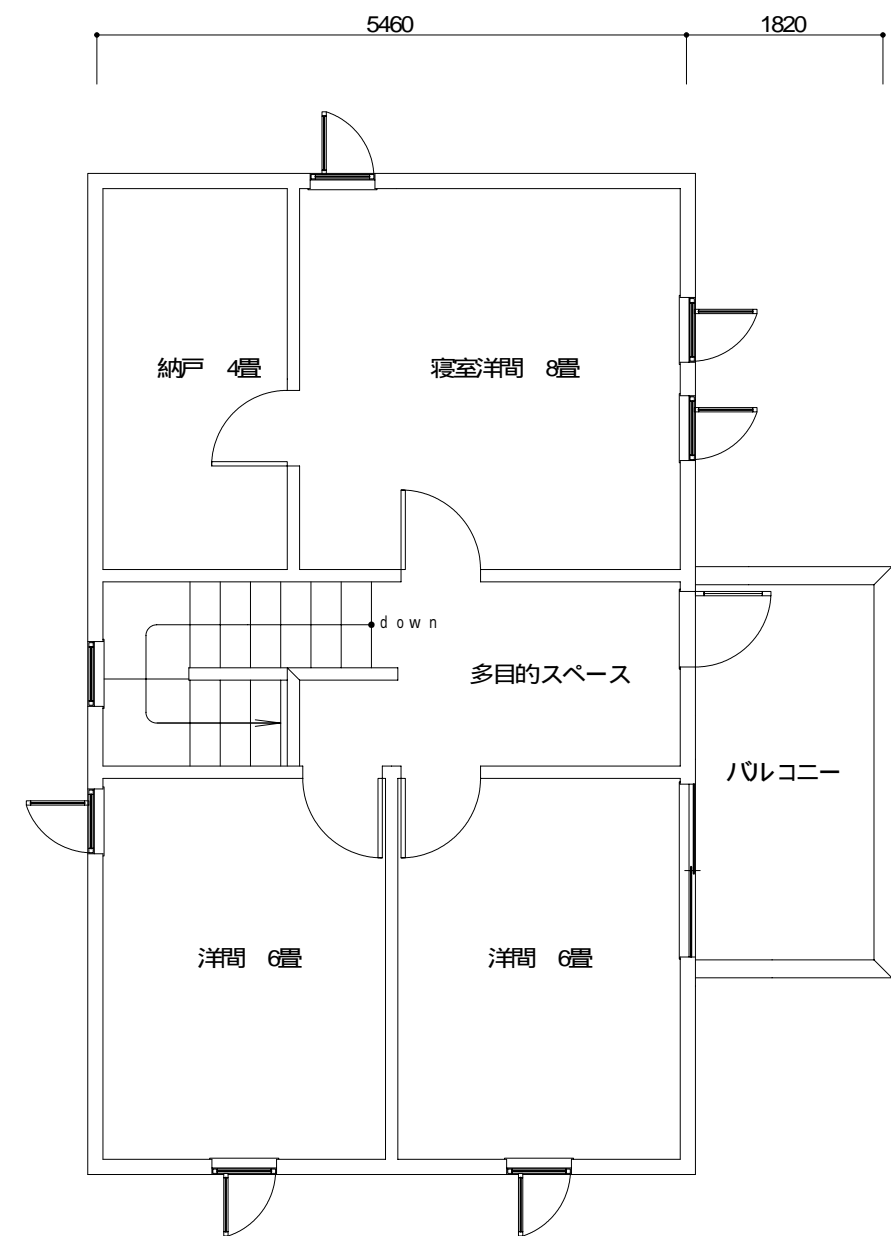


# A01 type



1F PLAN



2F PLAN

1 F床面積	52.99m <sup>2</sup>	(16坪)
2 F床面積	49.68m <sup>2</sup>	(15坪)
延床面積	102.68m <sup>2</sup>	(31坪)
敷地也面積	104.23m <sup>2</sup>	(31.46坪)
建築率	50.83%	
容積率	98.51%	